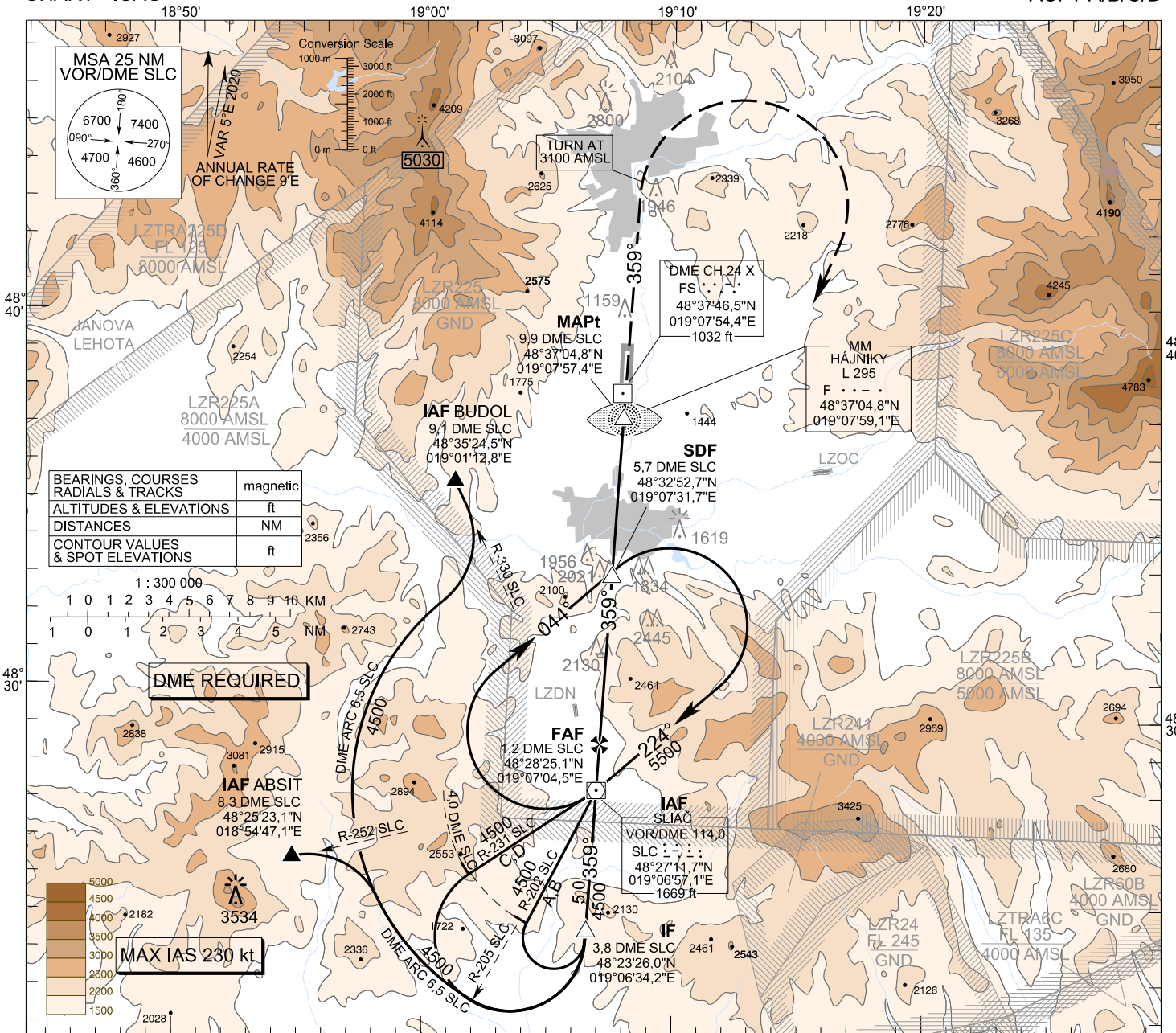


**INSTRUMENT  
APPROACH  
CHART - ICAO**

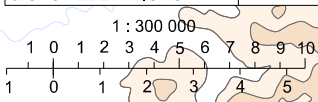
TRANSITION ALTITUDE 10 000 ft  
AD ELEV 1044 - 38 hPa  
THR RWY 36 ELEV 1014,5 - 37 hPa

SLIAČ RADAR 119,155  
SLIAČ TOWER 122,905

**SLIAČ (LZSL)  
VOR RWY 36  
ACFT A/B/C/D**

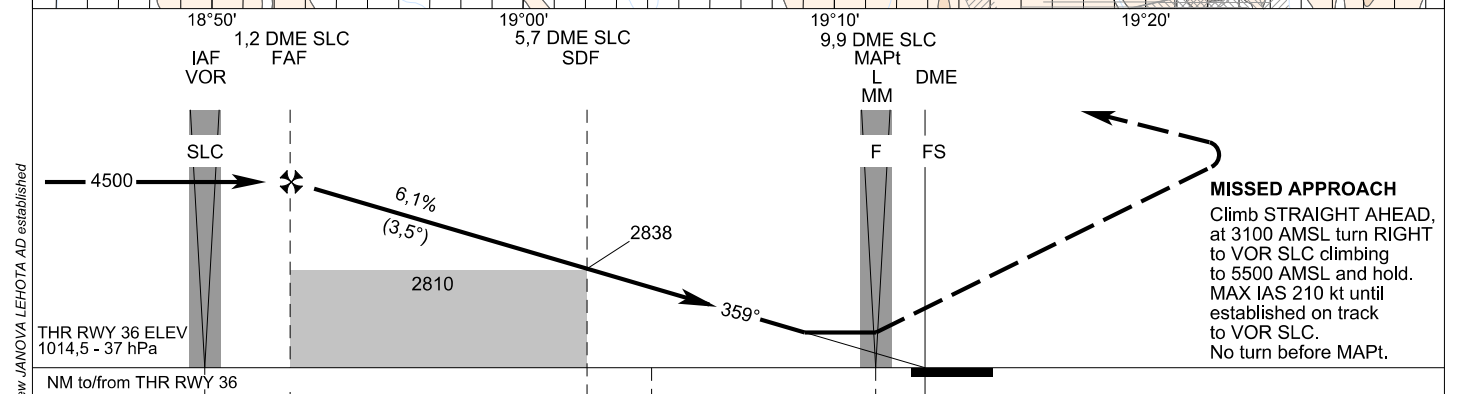


BEARINGS, COURSES RADIALS & TRACKS	magnetic
ALTITUDES & ELEVATIONS	ft
DISTANCES	NM
CONTOUR VALUES & SPOT ELEVATIONS	ft



**DME REQUIRED**

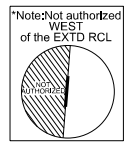
**MAX IAS 230 kt.**



**MISSED APPROACH**  
Climb STRAIGHT AHEAD, at 3100 AMSL turn RIGHT to VOR SLC climbing to 5500 AMSL and hold. MAX IAS 210 kt until established on track to VOR SLC. No turn before MAPt.

THR RWY 36 ELEV 1014,5 - 37 hPa  
NM to/from THR RWY 36

OCA (OCH)		A	B	C	D
Straight-in	without SDF	ft	2810 (1796)		
Approach	with SDF	ft	2410 (1396)		
Circling (* see Note)		ft	2410 (1366)	2810 (1766)	2840 (1796)



DME SLC	NM	7,0	6,0	5,0	4,0	3,0	2,0	
ALTITUDES	ft	2355	2726	3098	3470	3841	4213	
Ground speed	kt	70	90	100	120	140	160	180
FAF - MAPt (8,7 NM)	min:sec	7:27	5:48	5:13	4:21	3:43	3:15	2:54
Rate of descent (6,1%)	ft/min	434	557	619	743	867	991	1115

Timing not authorized for defining the MAPt

CHANGES: MAG VAR: MSA; new JANOVA LEHOTA AD established